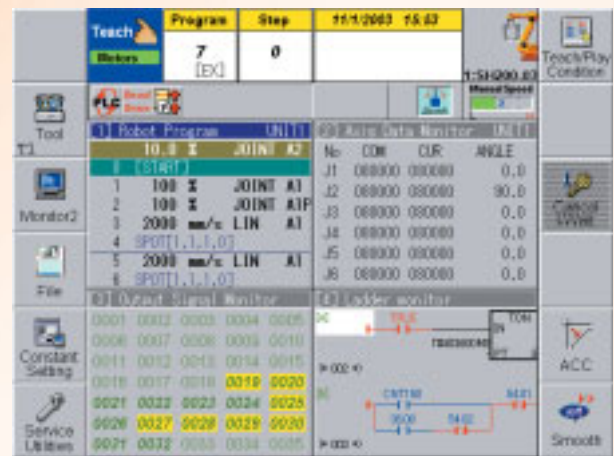




AX ROBOT CONTROLLER

Nachi AX PC-Based Robot Controller

Our latest high-performance, multi-tasking controller features hardware and software enhancements resulting in shorter cycle times. Programming is fast and flexible with additional options available through the teach pendant. With the internal manual/diagnostic function, maintenance can be done from a remote location. The AX also complies to international standard safety circuits for security you can count on.



Control Features

- 50mm short pitch move - 30% faster
- International standard safety circuit
- High-speed interference detection
- Fully digital drive with high-speed DSP motion control
- Simplified maintenance

Enhanced Software

- Real time operating system (RTOS) plus embedded WindowsNT®
- Improved robot motion
- Easy tools to develop and validate robot programs
- Software PLC directly controls peripherals
- Offline programming
- Visual maintenance with online manual

Teach Pendant

- Easy to operate - ergonomic design
- Enhanced color graphic Windows® display
- Pendant display functions can be customized
- Optional digital touch screen

Applications

Used on all Nachi robot products

Open Concept

- Extends to industry standard bus (ISA/PCI)
- Supports Windows® applications (with extra printed circuit board)



AX ROBOT CONTROLLER

Features	
Controlled Axes	Simultaneous 6 axes (standard), additional 12 axes optional
Memory Capacity	160,000 robot program points
Memory	Flash memory
External Storage Device I/F	Compact flash card I/F
Positioning Device	Absolute encoder
Drive System	Fully digital with DSP control AC Servo motors
Control Cabinet	
Unit	Free standing
Dimensions	Height: 1,180mm Width: 600mm Depth: 550mm
Weight	192kg
Programming Features	
Program Selection	9999 programs (BCD)
Programming	ICON and menu driven
Display Unit	Interactive teach pendant Windows®-style interface User programmable menu display Color graphic display with fine resolution (6.5" 640x480)
Language	SLIM (robot language)
System Software	Flash ROM
Application Software	Spot weld, seal, spray, arc, palletize, and more Integrated spot (Nachi or Medar) Integrated arc (Nachi)
Additional Features	User macros User coordinates Multi-robot control Internal electronic manual/diagnostic function
Equipment Interface	
Interface	Ethernet (10 Base T)
Input/Output (Standard)	32 inputs DC24V 32 outputs DC24V
(Optional)	64 inputs DC24V 64 outputs DC24V 120 VAC capabilities expandable up to 40 inputs/outputs
Input/Output (Optional)	AB RIO Node adapter (full rack)
Field Bus [Max 4ch] (Optional)	Device Net, profibus, and others supported
Analog Signal (Optional)	Input: 2 channels Output: 3 channels
Conveyor Pulse Counter (Optional)	2 channels
Additional Features	ISA, PCI bus
Power Supply	
(Standard)	AC200V~220V ±10%, 3 Phase, 50 or 60 Hz
(Optional)	AC380V~480V ±10%, 3 Phase, 50 or 60 Hz Others available
Environmental	
Ambient Temperature Rating	0 to 45 degrees C
Ambient Humidity	20 to 85% RH
Cooling Method	Heat exchanger

NACHI-FUJIKOSHI CORP.

Head Office

Toyama Plant

1-1-1 Fujikoshi-Honmachi, Toyama 930-8511, Japan Phone:076-423-5111 Fax:076-493-5211

Shiodome Sumitomo Bldg. 17F 1-9-2 Higashi-shinbashi, Minato-ku, Tokyo 105-0021, Japan

Phone:03-5568-5111 Fax:03-5568-5206

URL:<http://www.nachi-fujikoshi.co.jp> E-mail:webmaster@nachi-fujikoshi.co.jp

NACHI ROBOTIC SYSTEMS INC. (NRS)

22285 Roethel Drive, Novi, Michigan, 48375, U.S.A.

Phone:+1-248-305-6545 Fax:+1-248-305-6542

URL:<http://www.nachirobotics.com>

INDIANA BRANCH

715 Pushville Road, Greenwood, Indiana, 46143, U.S.A.

Phone:+1-317-535-5527 Fax:+1-317-535-3659

NACHI CANADA INC.

89 Courtland Ave., Unit No.2, Concord, Ontario, L4K 3T4, CANADA

Phone:+1-905-660-0088 Fax:+1-905-660-1146

URL:<http://www.nachicanada.com/>

NACHI MEXICANA, S.A. DE C.V.

Gral. Mariano Arista No.54, Local 5, Col. Argentina C.P. 11230,

Mexico D.F. MEXICO

Phone:+52-55-5386-1396 Fax:+52-55-5386-1336

NACHI EUROPE GmbH

Wiesenstrasse 148, 41460 Neuss (Heerd), GERMANY

Phone:+49-(0)2131-26830 Fax:+49-(0)2131-268330/268340

URL:<http://www.nachi.de/>

NACHI (U.K.) LTD

Unit 7, Junction Six Industrial Estate, Electric Avenue, Birmingham

B6 7JJ, U.K.

Phone:+44-(0)121-250-1880 Fax:+44-(0)121-250-1889

URL:<http://www.nachi.co.uk/>

FUJIKOSHI-NACHI (MALAYSIA) SDN. BHD.

No.17, Jalan USJ 21/3, 47630 UEP Subang Jaya, Selangor Darul

Ehsan, MALAYSIA

Phone:+60-(0)3-80247900 Fax:+60-(0)3-80235884

NACHI-FUJIKOSHI CORP.

THAILAND REPRESENTATIVE OFFICE

Chai-ho Wonggawiat Bldg. 889 Srinakarin Road, Samutprakam,

THAILAND 10270

Phone:+66-2-748-7322-4 Fax:+66-2-748-7325

NACHI-FUJIKOSHI CORP.

KOREA REPRESENTATIVE OFFICE

2F Dongsan Bldg. 276-4, Sungsu 2GA-3DONG Sungdong-Ku. Seoul

133-123, KOREA

Phone:+82-(0)2-469-2254 Fax:+82-(0)2-469-2264

Caution

In case that an end user uses this product for military purpose or production of weapon, this product may be liable for the subject of export restriction stipulated in the Foreign Exchange and Foreign Trade Control Law. Please go through careful investigation and necessary formalities for export.

The specifications are subject to changes without notice.

CATALOG NO.

R1010E-3

2005.11.X-ABE-ABE